



Variable Speed Drive CATALOGUE

E3
SERIES

General Purpose Drive
Easy control for all motor types

P2
SERIES

Powerful Performance
Advanced motor control



0.37kW – 160kW
240V – 480V
Single & 3 Phase Input

IP20

IP55

IP66

Quality. Service. Range

PHONE 1300 TECH TOP
www.techtop.com.au



The story of Techttop Australia

A business that's powered by people.

Techtop Australia Pty Ltd was established in 2013 through a strategic joint venture with Shanghai Top Motor Co., the largest manufacturer of aluminium electric motors in China. This partnership brought together world-class manufacturing capabilities with deep local market expertise, forming a foundation for excellence in industrial product supply across Australia and New Zealand.

The company is led by Director Rohan Pollard and Chairman Jack Gringlas OAM, whose combined experience in the Australian industrial sector spans over five decades. Their leadership has guided Techttop Australia's growth into a nationally recognised provider of electric motors, transmission products, and variable speed drives—known for quality, reliability, and service.



Headquartered in Dandenong, Victoria, Techttop Australia operates sales offices and warehouses in every mainland state—with locations in Melbourne, Sydney, Brisbane, Adelaide, and Perth, as well as a regional presence in Mackay, Queensland. This national footprint makes us the only company in our sector with direct representation across all major regions, ensuring rapid response times, consistent stock availability, and personalised service.

In 2024, Techttop Australia expanded into New Zealand through the acquisition of John Brooks, a respected and long-established provider of industrial solutions. With offices in Auckland and Christchurch, this acquisition has strengthened our regional presence and enhanced our ability to support customers across Australasia.

Techtop Australia is part of a global organisation, with Techttop partners operating in America, Canada, Europe, and the UAE, allowing us to leverage international innovation and supply chain strength while maintaining a strong local focus.

Each of our offices is led by experienced local managers who are well-regarded within the industry and trusted by our diverse customer base. Our team is made up of professional, knowledgeable, and enthusiastic staff, all committed to delivering outstanding customer service and technical support.



E3 SERIES

General Purpose Drive

	Page
E3 Series Overview	4
IP20 Model Detail	6
IP66 Model Detail	7
Application Macros	8
Drive Specification	9
Model Data	10 - 11
Options & Accessories	12



P2 SERIES

Powerful Performance

	Page
P2 Series Overview	13
At a Glance	15
Applications	17
Model Data	18 - 19
Drive Specification	20
Options & Accessories	21



Easy to Use

General Purpose Drive

Focused on ease of use, the E3 Series provides unrivalled simplicity of installation, connection and commissioning, allowing the user to benefit from precise motor control and energy savings within minutes.



Simple Commissioning

With just 14 basic parameters and application macro functions providing rapid set up, the E3 Series minimises start-up time.



Intuitive Keypad Control

Precise digital control at the touch of a button.



Application Macros

Switch between **Industrial, Pump & Fan** modes to optimise the E3 Series for your application.

Industrial | Pump | Fan

See **Page 8**

IP20

Up to 37kW

- Easy to use
- Compact & robust

See **Page 6**



Sensorless Vector Control for all Motor Types

<p>IM</p> <p>IE2 & IE3 Induction Motors</p>	<p>PM</p> <p>AC Permanent Magnet Motors</p>	<p>BLDC</p> <p>Brushless DC Motors</p>	<p>SynRM</p> <p>Synchronous Reluctance Motors</p>
--	--	---	--

Precise and reliable control for **IE2, IE3 & IE4 motors**



IP66


Up to 22kW

- Outdoor Rated
- Dust-tight
- Washdown ready

See Page 7



Key Features

- Internal Category C1 EMC filter
- Internal PI control
- Internal brake chopper
- Dual analogue inputs
- Operates up to 50°C
-  Bluetooth® connectivity
- Option for control of single phase motors

Modbus RTU CAN

on-board as standard

Internal Category C1 EMC Filter

An internal filter in every E3 Series drive saves cost and time for installation.

Cat C1 according to EN61800-3:2004



IP20 Models

Up to 37kW

Compact, robust and reliable general purpose drive for panel mounting

Simple Installation

DIN rail and keyhole mounting options

Fast Connection

5mm rising clamp terminals with captive screws

Quick Reference

Integrated help card

Operates up to 50°C

Modbus RTU
CANopen

on-board as standard

Optistick Smart

Rapid commissioning tool

Incredibly Easy to Use

- Built in PI control, EMC filter (C1) & brake chopper
- Application macros for industrial, fan and pump operation
- **Bluetooth** connectivity

Dual analogue inputs

Motor supply connects at base

Controls Multiple Motor Types

- IE2, 3 & 4
- IM, PM, BLDC and SynRM

4 sizes cover global supply ratings



Simply Power Up

Techtop Australia provides precise motor control and energy savings using the factory settings. Simply power up and the drive can immediately deliver energy savings.

14 basic parameters allow simple adjustment for your application if required, with up to 50 parameters available in total for a highly flexible performance.

IP66 Models

Up to 22kW

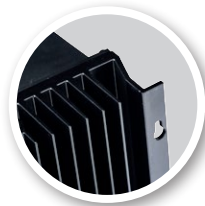
Enclosed drives for direct machine mounting, dust-tight and ready for washdown duty



IP66 / NEMA 4X

Coated Heatsink as Standard

Ideal for hygiene based operations requiring washdown — such as food and beverage



Switched or non-switched

Conformal coating as standard



- 1 2 x RJ45 ports eliminate the need for a splitter.
- 2 Easily accessible EMC disconnect
- 3 Easy to wire due to the large, accessible chamber and removeable gland plate.

IP66/Nema 4X outdoor rated

Built with tough polycarbonate plastics specifically chosen to withstand degradation by ultra violet (UV), greases, oils and acids. Also robust enough not to be brittle at -20°C.

Dust-Tight Design

Install directly on your processing equipment and be sure of protection from dust and contaminants.

Washdown Ready

With a sealed ABS enclosure and corrosion resistant heatsink, the E3 Series IP66 is ideal for high-pressure washdown applications.

Switched models

Simply wire up the drive, turn the inbuilt potentiometer and the motor will start running – allowing immediate energy savings

Saving energy cannot be easier than this!

Local Speed Potentiometer

Run Reverse / Off / Run Forward Switch

For ultimate ease of use

Lockable Mains Disconnect / Isolator



Application Macros

Switch modes at the touch of a button to optimise Techtop E3 for your application

Single parameter application macro selection



Industrial Mode

Industrial Mode optimises the E3 Series for load characteristics of typical industrial applications.

Applications include:

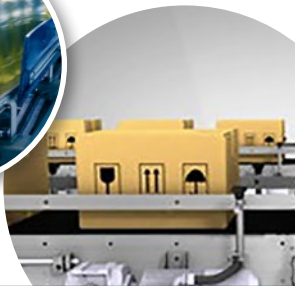
- Conveyors
- Mixers
- Treadmills

Sensorless Vector provides high starting torque and excellent speed regulation

IP20 panel mount units or IP66 for direct machine mounting



Rapid parameter cloning using OPTISTICK Smart



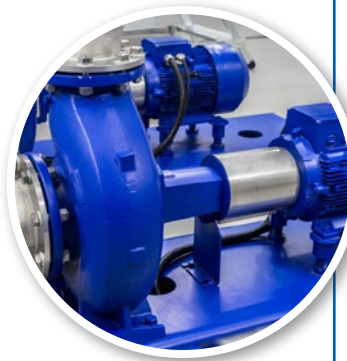
Pump Mode

Pump Mode makes energy efficient pump control easier than ever.

Applications include:

- Dosing Pumps
- Borehole Pumps
- Transfer Pumps
- Swimming Pools
- Spas
- Fountains

- Constant or variable torque
- Internal PI control

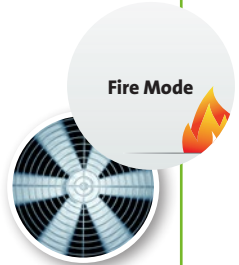


Fan mode

Fan Mode (inc. fire operation) makes air handling a breeze, ideal for simple HVAC systems.

Applications include:

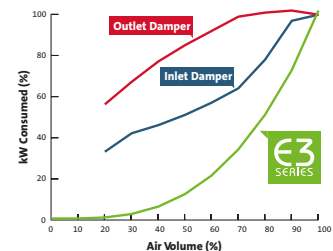
- Air Handling Units
- Ventilation Fans
- Circulating Fans
- Air Curtains
- Kitchen Extract



- High efficiency **variable torque** motor control
- Flying start capability
- Mains loss ride through
- PI control

Instant Power Savings

The graph below shows the incredible efficiency of the E3 Series for controlling airflow compared to traditional damper control methods.



Modbus RTU CAN

on-board as standard

E3 Series Drive Specifications

Input Ratings	Supply Voltage	110 – 115V ± 10% 200 – 240V ± 10% 380 – 480V ± 10%
	Supply Frequency	48 – 62Hz
	Displacement Power Factor	> 0.98
	Phase Imbalance	3% Maximum allowed
	Inrush Current	< rated current
	Power Cycles	120 per hour maximum, evenly spaced

Output Ratings	Output Power	110V 1 Ph Input: 0.5–1.5HP (230V 3 Ph Output) 230V 1 Ph Input: 0.37–4kW (0.5–5HP) 230V 3 Ph Input: 0.37–11kW (0.5–15HP) 400V 3 Ph Input: 0.75–22kW 460V 3 Ph Input: 1–30HP
	Overload Capacity	150% for 60 seconds 175% for 2.5 seconds
	Output Frequency	0 – 500Hz, 0.1Hz resolution
	Acceleration Time	0.01 – 600 seconds
	Deceleration Time	0.01 – 600 seconds
	Typical Efficiency	> 98%

Ambient Conditions	Temperature	Storage: –40 to 60°C Operating: –20 to 50°C
	Altitude	Up to 1000m ASL without derating Up to 2000m maximum UL approved Up to 4000m maximum (non UL)
	Humidity	95% Max, non condensing
	Vibration	Conforms to EN61800-5-1

Enclosure	Ingress Protection	IP20, IP66
------------------	--------------------	------------

Programming	Keypad	Built-in keypad as standard Optional remote mountable keypad
	Display	7 Segment LED
	PC	OptiTools Studio

Control Specification	Control Method	Sensorless Vector Speed Control PM Vector Control BLDC Control Synchronous Reluctance	
	PWM Frequency	4 – 32kHz Effective	
	Stopping Mode	Ramp to stop: User Adjustable 0.1 – 600 secs Coast to stop	
	Braking	Motor Flux Braking Built-in braking transistor (not frame size 1)	
	Skip Frequency	Single point, user adjustable	
	Setpoint Control	Analog Signal	0 to 10 Volts 10 to 0 Volts 0 to 20mA 20 to 0mA 4 to 20mA 20 to 4mA
		Digital	Motorised Potentiometer (Keypad) Modbus RTU CANopen EtherNet/IP

Fieldbus	Built-in	CANopen	125–1000 kbps
		Modbus RTU	9.6–115.2 kbps selectable

I/O Specification	Power Supply	24 Volt DC, 100mA, Short Circuit Protected 10 Volt DC, 5mA for Potentiometer
	Programmable Inputs	4 Total - 2 Digital - 2 Analog / Digital selectable
	Digital Inputs	8 – 30 Volt DC, internal or external supply Response time < 4ms
	Analog Inputs	Resolution: 12 bits Response time: < 4ms Accuracy: ± 2% full scale Parameter adjustable scaling and offset
	Programmable Outputs	2 Total - 1 Analog / Digital - 1 Relay
	Relay Outputs	Maximum Voltage: 250 VAC, 30 VDC Switching Current Capacity: 6A AC, 5A DC
Analog Outputs	0 to 10 Volt	

Application Features	PI Control	Internal PI Controller Standby / Sleep Function
	Fire Mode	Bidirectional Selectable Speed Setpoint (Fixed / PI / Analog / Fieldbus)

Maintenance & Diagnostics	Fault Memory	Last 4 Trips stored with time stamp
	Data Logging	Logging of data prior to trip for diagnostic purposes: Output Current Drive Temperature DC Bus Voltage
	Monitoring	Hours Run Meter

Standards Compliance	Low Voltage Directive	Adjustable speed electrical power drive systems. EMC requirements
	EMC Directive	2014/30/EU 230V 1Ph. Filtered Units : Cat C1 according to EN61800-3:2004
		2004/108/EC Cat C1 according to EN61800-3:2004
	Machinery Directive	2006/42/EC
Conformance	CE, RCM	



Model Data

E3 IP20

Techtop E3 IP20 Single Phase

1 Ph. Input, 3 Ph. Output, 200-240V, With Internal EMC Filter

Branded Part Number	Frame Size	Output Current (Amps)	Power Rating		Weight (Kg)	Dimensions (mm) H x W x D
			(kW)	(HP)		
TTA-3-120023-1F12	1	2.3	0.37	0.5	1	173 X 83 X 123
TTA-3-120043-1F12	1	4.3	0.75	1	1	173 X 83 X 123
TTA-3-120070-1F12	1	7	1.5	2	1	173 X 83 X 123
TTA-3-220070-1F42	2	7	1.5	2	1.7	221 X 110 X 150
TTA-3-220105-1F42	2	10.5	2.2	3	1.7	221 X 110 X 150



Techtop E3 IP20 Three Phase

3 Ph. Input, 3 Ph. Output, 380-480V, With Internal EMC Filter

Branded Part Number	Frame Size	Output Current (Amps)	Power Rating		Weight (Kg)	Dimensions (mm) H x W x D
			(kW)	(HP)		
TTA-3-140012-3F12	1	1.2	0.37	0.5	1	173 x 83 x 123
TTA-3-140022-3F12	1	2.2	0.75	1	1	173 x 83 x 123
TTA-3-140041-3F12	1	4.1	1.5	2	1	173 x 83 x 123
TTA-3-240041-3F42	2	4.1	1.5	2	1.7	221 x 110 x 150
TTA-3-240058-3F42	2	5.8	2.2	3	1.7	221 x 110 x 150
TTA-3-240095-3F42	2	9.5	4	5	1.7	221 x 110 x 150
TTA-3-340140-3F42	3	14	5.5	7.5	3.2	261 x 131 x 175
TTA-3-340180-3F42	3	18	7.5	10	3.2	261 x 131 x 175
TTA-3-340240-3F42	3	24	11	15	3.2	261 x 131 x 175
TTA-3-440300-3F42	4	30	15	20	9.1	420 x 171 x 212
TTA-3-440390-3F42	4	39	18.5	25	9.1	420 x 171 x 212
TTA-3-440460-3F42	4	46	22	30	9.1	420 x 171 x 212
TTA-3-540610-3F42	5	61	30	40	16.9	486 x 222 x 226
TTA-3-540720-3F42	5	72	37	50	16.9	486 x 222 x 226

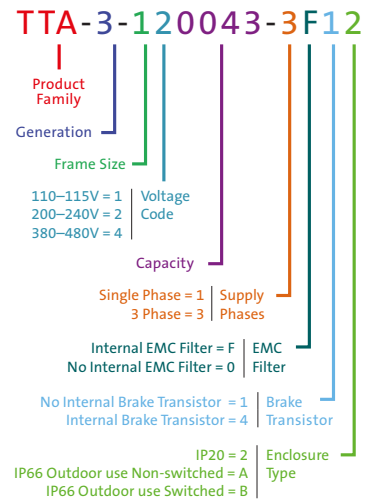
The Techttop E3 IP20 Series is complete with the following features as standard

- 3 preset modes for application - Industrial, Pump and Fan
- Internal C1 category EMC Filter according to EN61800-3:2004
- Simple commissioning - Just 14 basic parameters for rapid set up
- Modbus RTU and Canopen on-board as standard
- Sensorless Vector control for all motor types
- Operates in ambient temperatures up to 50°C
- Bluetooth connectivity
- Compact robust and reliable general purpose drive
- IP20 suitable for panel mounting with many mounting options

1 Year warranty as standard

2 years warranty when purchased with a motor

Model Code Guide:



E3 IP66

Techtop E3 IP66 Single Phase Outdoor - Non Switched

1 Ph. Input, 3 Ph. Output, 200-240V, With Internal EMC Filter

Branded Part Number	Frame Size	Output Current (Amps)	Power Rating		Weight (Kg)	Dimensions (mm) H x W x D
			(kW)	(HP)		
TTA-3-120023-1F1A	1	2.3	0.37	0.5	2.2	232 X 161 X 162
TTA-3-120043-1F1A	1	4.3	0.75	1	2.2	232 X 161 X 162
TTA-3-120070-1F1A	1	7	1.5	2	2.2	232 X 161 X 162
TTA-3-220070-1F4A	2	7	1.5	2	3.4	257 X 188 X 182
TTA-3-220105-1F4A	2	10.5	2.2	3	3.4	257 X 188 X 182

Techtop E3 IP66 Single Phase Outdoor - Control Switches + Disconnect

1 Ph. Input, 3 Ph. Output, 200-240V, With Internal EMC Filter

Branded Part Number	Frame Size	Output Current (Amps)	Power Rating		Weight (Kg)	Dimensions (mm) H x W x D
			(kW)	(HP)		
TTA-3-120023-1F1B	1	2.3	0.37	0.5	2.3	232 X 161 X 162
TTA-3-120043-1F1B	1	4.3	0.75	1	2.3	232 X 161 X 162
TTA-3-120070-1F1B	1	7	1.5	2	2.3	232 X 161 X 162
TTA-3-220070-1F4B	2	7	1.5	2	3.5	257 X 188 X 182
TTA-3-220105-1F4B	2	10.5	2.2	3	3.5	257 X 188 X 182

Techtop E3 IP66 Three Phase - Non Switched

3 Ph. Input, 3 Ph. Output, 380-480V, With Internal EMC Filter

Branded Part Number	Frame Size	Output Current (Amps)	Power Rating		Weight (Kg)	Dimensions (mm) H x W x D
			(kW)	(HP)		
TTA-3-140012-3F1A	1	1.2	0.37	0.5	2.2	232 x 161 x 162
TTA-3-140022-3F1A	1	2.2	0.75	1	2.2	232 x 161 x 162
TTA-3-140041-3F1A	1	4.1	1.5	2	2.2	232 x 161 x 162
TTA-3-240041-3F4A	2	4.1	1.5	2	3.4	257 x 188 x 182
TTA-3-240058-3F4A	2	5.8	2.2	3	3.4	257 x 188 x 182
TTA-3-240095-3F4A	2	9.5	4	5	3.4	257 x 188 x 182
TTA-3-340140-3F4A	3	14	5.5	7.5	6.6	310 x 210.5 x 238
TTA-3-340180-3F4A	3	18	7.5	10	6.6	310 x 210.5 x 238
TTA-3-340240-3F4A	3	24	11	15	6.6	310 x 210.5 x 238
TTA-3-440300-3F4A	4	30	15	20	10.7	360 x 240 x 275
TTA-3-440390-3F4A	4	39	18.5	25	10.7	360 x 240 x 275
TTA-3-440460-3F4A	4	46	22	30	10.7	360 x 240 x 275

Techtop E3 IP66 Three Phase - Switched

3 Ph. Input, 3 Ph. Output, 380-480V, With Internal EMC Filter

Branded Part Number	Frame Size	Output Current (Amps)	Power Rating		Weight (Kg)	Dimensions (mm) H x W x D
			(kW)	(HP)		
TTA-3-140012-3F1B	1	1.2	0.37	0.5	2.3	232 x 161 x 162
TTA-3-140022-3F1B	1	2.2	0.75	1	2.3	232 x 161 x 162
TTA-3-140041-3F1B	1	4.1	1.5	2	2.3	232 x 161 x 162
TTA-3-240041-3F4B	2	4.1	1.5	2	3.5	257 x 188 x 182
TTA-3-240058-3F4B	2	5.8	2.2	3	3.5	257 x 188 x 182
TTA-3-240095-3F4B	2	9.5	4	5	3.5	257 x 188 x 182
TTA-3-340140-3F4B	3	14	5.5	7.5	6.6	310 x 210.5 x 238
TTA-3-340180-3F4B	3	18	7.5	10	6.6	310 x 210.5 x 238
TTA-3-340240-3F4B	3	24	11	15	6.6	310 x 210.5 x 238
TTA-3-440300-3F4B	4	30	15	20	10.7	360 x 240 x 275
TTA-3-440390-3F4B	4	39	18.5	25	10.7	360 x 240 x 275
TTA-3-440460-3F4B	4	46	22	30	10.7	360 x 240 x 275



The Techtop E3 IP66 Series is complete with the following features as standard

- 3 preset modes for application - Industrial, Pump and Fan.
- Internal C1 category EMC Filter according to EN61800-3:2004
- Simple commissioning - Just 14 basic parameters for rapid set up
- Modbus RTU and Canopen on-board as standard
- Sensorless Vector control for all motor types
- Operates in ambient temperatures up to 50°C
- Bluetooth connectivity
- Compact robust and reliable general purpose drive
- IP66 suitable for mounting externally with many mounting options

1 Year warranty as standard

2 years warranty when purchased with a motor

Options & Accessories

Optistick Smart



Optistick Smart TTA-3-STICK-IN
Rapid Commissioning Tool

- Allows copying, backup and restore of drive parameters
- Provides Bluetooth interface to a PC running OptiTools Studio or the OptiTools Mobile app on a smartphone
- Onboard NFC (Near Field Communication) for rapid data transfer

Remote Keypads



Optipad TTA-3-OPPAD-IN
Remote Keypad & TFT Display

Optiport 2 TTA-2-OPORT-IN
Remote Keypad & LED Display

RJ45 Accessories



Ideal for simple and fast connection of Modbus RTU/CAN networks

- TTA-J4505-IN** RJ45 Cable 0.5m
- TTA-J4510-IN** RJ45 Cable 1.0m
- TTA-J4530-IN** RJ45 Cable 3.0m
- TTA-J455P-IN** RS485 3 Way Data Cable Splitter RJ45

EtherNet Module



EtherNet Module TTA-2-ETHEG-IN

- ODVA compliant EtherNet/IP Modbus Translator Device
- Compatible with all drive platforms: P2, E3 & Eco
- Integrated network switch: simplifying network architecture
- Compatible with RSLogix and CoDeSys PLCs

External EMC Filters, Input Chokes & Output Filters are available

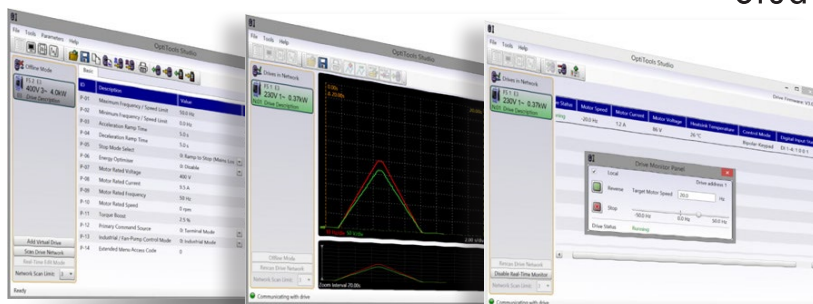


OptiTools Studio

Drive commissioning and parameter backup

- Real-time parameter editing
- Drive network communication
- Parameter upload, download and storage
- Simple PLC function programming
- Real-time scope function and data logging
- Real-time data monitoring

Compatible with:
Windows Vista & Windows 7, Windows 8, Windows 8.1 & Windows 10



Powerful Performance

World leading control for the latest generation of permanent magnet and standard induction motors

Conveyer Systems Processing Plants
 Manufacturing Plastics Rubber Chemical
 Pumping Machine Tools Elevators Cranes



World Leading Motor Control

Designed for fast installation and commissioning, P2 Series provides the most cost effective solution for industry.

All P2 Series units provide 150% overload for 60 seconds as standard, ensuring each drive is suitable for Heavy Duty applications, whilst the IP55 enclosed versions ensure the drive is tough enough to survive in industrial environments.

Extensive I/O and communications interface capabilities ensure the drive can be integrated quickly and efficiently into a wide variety of control systems with the minimum commissioning time, ensuring rapid start up. Invertek's simple parameter structure, and carefully selected factory parameter settings ensure that commissioning time is kept to a minimum.



Compliant with international standards.
 Manufactured in the UK.

150% overload for 60 seconds



Advanced Motor Control

The P2 Series has been uniquely developed to allow a wide range of different motor types to be used, with only parameter changes being required. This technology allows the same drive to be used in a wide range of applications, allowing OEMs and end user alike to take advantage of the energy saving provided by using the latest motor technologies.

AC Induction Motors

The majority of AC motors in use today around the world are standard induction motors. These motors are relatively low cost, readily available and provide good performance with long service life. With the ever increasing focus on energy efficiency, motor manufacturers have refined and improved their designs in recent years.

P2 Series has been developed to provide optimum control and maximum efficiency when operating with older motors designs, or newer high efficiency designs.

Operation can be in simple V/F control mode or in High Performance Third Generation Vector Mode, which provides up to 200% torque from zero speed without requiring an encoder.

Permanent Magnet AC Motors

Permanent magnet AC motors provide improved efficiency compared to standard induction motors. Using permanent magnets in the motor construction eliminates the need for any magnetising current, reducing electrical losses. PM motors have been used for many years in high performance applications, however this has always required the use of a feedback device, such as a resolver or encoder. P2 Series has been designed to operate with AC PM motors without requiring any feedback device, allowing them to be used for their energy efficiency benefits without incurring extra cost and complexity in applications which do not require position feedback.

Brushless DC Motors

BLDC motors are similar to AC PM motors, however the design requires a slightly different control method to optimise the performance. P2 Series has the flexibility to control this type of motor, requiring only simple parameter changes. This provides much greater flexibility for OEMs, allowing P2 Series to be used in a variety of applications, with various motor types.

Synchronous Reluctance Motors

Synchronous Reluctance Motors (SynRM), not to be confused with Switched Reluctance Motors, share a similar stator construction to standard induction motors, however the rotor is substantially different, in order to improve the overall efficiency of the motor. SynRM motors are ideally suited to variable torque applications.

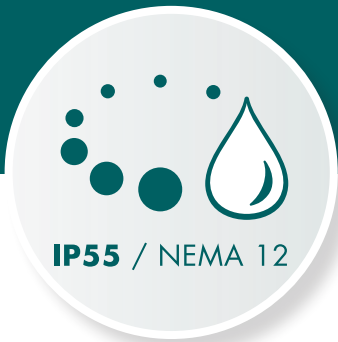
P2 Series can control synchronous reluctance motors, allowing the energy saving benefits to be realised.

At a Glance...

High performance, excellent usability and flexible to meet the needs of your application

**Keyhole
Mounts for fast
installation**

**Integrated
Keypad &
Display**



IP55 / NEMA 12



**Safe
Torque Off
SIL2/PLd
certified**

**Integrated
EMC Filter**



**Pluggable Control
Terminals**



**High Quality
Long-life Fans**

**Integral
Brake
Transistor**



**Integrated Cable
Management**

Contactor-style Power Wiring Arrangement



Keyhole Mounts for fast installation



DIN Rail Mount

Modbus RTU and CANopen on board as standard



Pluggable Modules for I/O, Encoder, Alternative Fieldbus

**Modbus
CANopen**



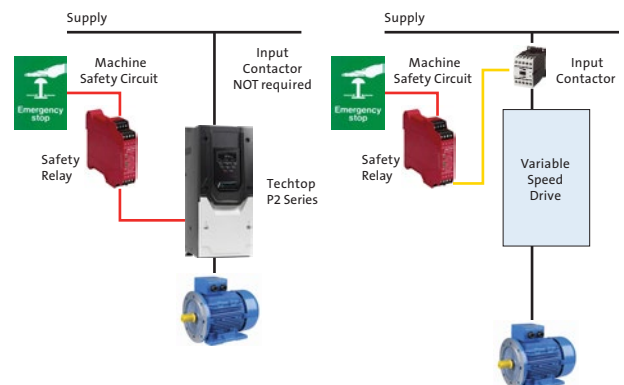
Safe Torque Off (provided as standard)

With

Without

The P2 Series features a safe torque off function to allow simple integration into machine critical safety circuits.

- Simple machine design reduces component costs, saves panel space and minimises installation time
- Faster shut down and reset procedures reduce system maintenance time
- Better safety standard compared to mechanical solution
- Better motor connection. Single cable with no interruption.



Applications

High performance, accurate motor control for even the most demanding of applications



Mining & Quarrying



- Feed conveyers
- Crushers
- Cranes

Metals & Processing



- Grinding
- Cutting
- Polishing
- Drilling
- Rolling

Rubber & Plastics



- Extruders
- Moulding
- Mixers
- Winding

Food & Beverage



- Conveyers
- Pumps
- Mixers
- Palletisers

Powerful, versatile
and easy to use

Model Data

P2 IP20

Techtop P2 IP20 Three Phase

3 Ph. Input, 3 Ph. Output, 380-480V, EMC Filter, Brake Chopper, TFT Display

Branded Part Number	Frame Size	Output Current (Amps)	Power Rating (kW)	Weight (Kg)	Dimensions (mm) H x W x D
TTA-2-24075-3KF42-MN	2	2.2	0.75	1.8	221 x 110 x 185
TTA-2-24150-3KF42-MN	2	4.1	1.5	1.8	221 x 110 x 185
TTA-2-24220-3KF42-MN	2	5.8	2.2	1.8	221 x 110 x 185
TTA-2-24400-3KF42-MN	2	9.5	4	1.8	221 x 110 x 185
TTA-2-34055-3KF42-MN	3	14	5.5	3.5	261 x 131 x 205
TTA-2-34075-3KF42-MN	3	18	7.5	3.5	261 x 131 x 205



IP20
Cabinet Mount

P2 IP55

Techtop P2 IP55 Three Phase

3 Ph. Input, 3 Ph. Output, 380-480V, EMC Filter, Brake Chopper, TFT Display

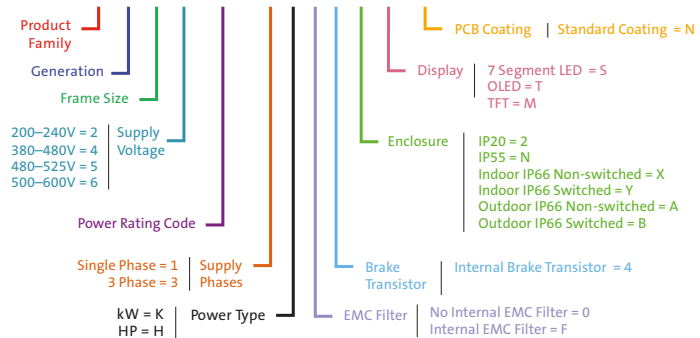
Branded Part Number	Frame Size	Output Current (Amps)	Power Rating (kW)	Weight (Kg)	Dimensions (mm) H x W x D
TTA-2-44110-3KF4N-MN	4	24	11	11.5	450 x 171 x 252
TTA-2-44150-3KF4N-MN	4	30	15	11.5	450 x 171 x 252
TTA-2-44185-3KF4N-MN	4	39	18.5	11.5	450 x 171 x 252
TTA-2-44220-3KF4N-MN	4	46	22	11.5	450 x 171 x 252
TTA-2-54300-3KF4N-MN	5	61	30	23	540 x 235 x 270
TTA-2-54370-3KF4N-MN	5	72	37	23	540 x 235 x 270
TTA-2-64045-3KF4N-MN	6	90	45	55	865 x 330 x 330
TTA-2-64055-3KF4N-MN	6	110	55	55	865 x 330 x 330
TTA-2-64075-3KF4N-MN	6	150	75	55	865 x 330 x 330
TTA-2-64090-3KF4N-MN	6	180	90	55	865 x 330 x 330
TTA-2-74110-3KF4N-MN	7	202	110	89	1280 x 330 x 360
TTA-2-74132-3KF4N-MN	7	240	132	89	1280 x 330 x 360
TTA-2-74160-3KF4N-MN	7	302	160	89	1280 x 330 x 360



IP55
With
TFT Display

Model Code Guide

TTA-2-2 2 075-1K F4 #-# N



P2 IP66

Techtop P2 IP66 Single Phase Outdoor - Non-Switched

1 Ph. Input, 3 Ph. Output, 200-240V, EMC Filter, Brake Chopper, TFT Display

Branded Part Number	Frame Size	Output Current (Amps)	Power Rating (kW)	Weight (Kg)	Dimensions (mm) H x W x D
TTA-2-22075-1KF4A-MN	2	4.3	0.75	4.3	257 x 188 x 239
TTA-2-22150-1KF4A-MN	2	7	1.5	4.3	257 x 188 x 239
TTA-2-22220-1KF4A-MN	2	10.5	2.2	4.3	257 x 188 x 239

Techtop P2 IP66 Three Phase Outdoor - Non-Switched

3Ph. Input, 3Ph. Output, 380-480V, EMC Filter, Brake Chopper, TFT Display

Branded Part Number	Frame Size	Output Current (Amps)	Power Rating (kW)	Weight (Kg)	Dimensions (mm) H x W x D
TTA-2-24075-3KF4A-MN	2	2.2	0.75	4.3	257 x 188 x 239
TTA-2-24150-3KF4A-MN	2	4.1	1.5	4.3	257 x 188 x 239
TTA-2-24220-3KF4A-MN	2	5.8	2.2	4.3	257 x 188 x 239
TTA-2-24400-3KF4A-MN	2	9.5	4	4.3	257 x 188 x 239
TTA-2-34055-3KF4A-MN	3	14	5.5	7	310 x 211 x 266
TTA-2-34075-3KF4A-MN	3	18	7.5	7	310 x 211 x 266
TTA-2-34110-3KF4A-MN	3	24	11	7	310 x 211 x 266
TTA-2-44150-3KF4A-MN	4	30	15	9.5	360 x 240 x 271
TTA-2-44185-3KF4A-MN	4	39	18.5	9.5	360 x 240 x 271
TTA-2-44220-3KF4A-MN	4	46	22	9.5	360 x 240 x 271

Techtop P2 IP66 Single Phase Outdoor - Switched

1 Ph. Input, 3 Ph. Output, 200-240V, EMC Filter, Brake Chopper, TFT Display

Branded Part Number	Frame Size	Output Current (Amps)	Power Rating (kW)	Weight (Kg)	Dimensions (mm) H x W x D
TTA-2-22075-1KF4B-MN	2	4.3	0.75	4.4	257 x 188 x 239
TTA-2-22150-1KF4B-MN	2	7	1.5	4.4	257 x 188 x 239
TTA-2-22220-1KF4B-MN	2	10.5	2.2	4.4	257 x 188 x 239

Techtop P2 IP66 Three Phase Outdoor - Switched

3Ph. Input, 3Ph. Output, 380-480V, EMC Filter, Brake Chopper, TFT Display

Branded Part Number	Frame Size	Output Current (Amps)	Power Rating (kW)	Weight (Kg)	Dimensions (mm) H x W x D
TTA-2-24075-3KF4B-MN	2	2.2	0.75	4.4	257 x 188 x 239
TTA-2-24150-3KF4B-MN	2	4.1	1.5	4.4	257 x 188 x 239
TTA-2-24220-3KF4B-MN	2	5.8	2.2	4.4	257 x 188 x 239
TTA-2-24400-3KF4B-MN	2	9.5	4	4.4	257 x 188 x 239
TTA-2-34055-3KF4B-MN	3	14	5.5	7.1	310 x 211 x 266
TTA-2-34075-3KF4B-MN	3	18	7.5	7.1	310 x 211 x 266
TTA-2-34110-3KF4B-MN	3	24	11	7.1	310 x 211 x 266
TTA-2-44150-3KF4B-MN	4	30	15	9.5	360 x 240 x 271
TTA-2-44185-3KF4B-MN	4	39	18.5	9.5	360 x 240 x 271
TTA-2-44220-3KF4B-MN	4	46	22	9.5	360 x 240 x 271



IP66
Outdoor
Non-Switched



IP66
Outdoor
Switched

P2 Series Drive Specifications

Input Ratings	Supply Voltage	200 – 240V ± 10% 380 – 480V ± 10%
	Supply Frequency	48 – 62Hz
	Displacement Power Factor	> 0.98
	Phase Imbalance	3% Maximum allowed
	Inrush Current	< rated current
	Power Cycles	120 per hour maximum, evenly spaced

Output Ratings	Output Power	230V 1Ph. Input: 0.75–2.2kW (1–3HP) 230V 3Ph. Input: 0.75–75kW (1–100HP) 400V 3Ph. Input: 0.75–250kW 460V 3Ph. Input: 1–350HP 575V 3Ph. Input: 0.75–110kW (1–150HP)
	Overload Capacity	150% for 60 seconds
	Output Frequency	0 – 500Hz, 0.1Hz resolution
	Acceleration Time	0.01 – 600 seconds
	Deceleration Time	0.01 – 600 seconds
	Typical Efficiency	> 98%

Ambient Conditions	Temperature	Storage: –40 to 60°C Operating: –10 to 50°C
	Altitude	Up to 1000m ASL without derating Up to 2000m maximum UL Approved Up to 4000m maximum (non UL)
	Humidity	95% Max, non condensing
	Vibration	Conforms to IEC 60068-2-6 Sinusoidal Vibration 10 - 57Hz @ 0.075mm Pk 57 - 150Hz @ 1g Pk

Enclosure	Ingress Protection	IP20, IP55, IP66
-----------	--------------------	------------------

Programming	Keypad	Built-in keypad as standard Optional remote mountable keypad
	Display	Built-in multi language text display (IP55 & IP66) 7 Segment LED (IP20)
	PC	OptiTools Studio

Control Specification	Control Method	V/F Voltage Vector Energy Optimised V/F 3GV Sensorless Vector Speed Control 3GV Sensorless Vector Torque Control Closed Loop (Encoder) Speed Control Closed Loop (Encoder) Torque Control PM Vector Control BLDC Control Synchronous Reluctance	
	PWM Frequency	4 – 32kHz Effective	
	Stopping Mode	Ramp to stop: User Adjustable 0.1 – 600 secs Coast to stop	
	Braking	Motor Flux Braking Built-in Braking Transistor	
	Skip Frequency	Single point, user adjustable	
	Setpoint Control	Analog Signal	0 to 10 Volts 10 to 0 Volts –10 to +10 Volts 0 to 20mA 20 to 0mA 4 to 20mA 20 to 4mA PTC
		Digital	Motorised Potentiometer (Keypad & Terminal) Modbus RTU CANopen

Fieldbus	Built-in	CANopen 125–1000 kbps Modbus RTU 9.6 - 115.2 kbps selectable 8N1, 8N2, 8E1, 8O1
	Optional	Other PROFIBUS DP (DPV1) PROFINET IO DeviceNet EtherNet/IP EtherCAT Modbus TCP

I/O Specification	Power Supply	24 Volt DC, 100mA, Short Circuit Protected 10 Volt DC, 10mA for Potentiometer
	Programmable Inputs	5 Total as standard (Optional additional 3) - 3 Digital (Optional additional 3) - 2 Analog / Digital Selectable 5 Digital With CAN IO Option
	Digital Inputs	Opto - Isolated 8 – 30 Volt DC, internal or external supply Response time < 4ms
	Analog Inputs	Resolution: 12 bits Response time: < 4ms Accuracy: < 1% full scale Parameter adjustable scaling and offset
	PTC Input	Motor PTC / Thermistor Input Trip Level : 3kΩ
	Relay Outputs	7 Total (Optional additional 3) - 2 Analog / Digital - 2 Relays (Optional additional 3) 3 With CAN IO Option Module
	Analog Outputs	Maximum Voltage: 250 VAC, 30 VDC Switching Current Capacity: 5A AC , 5A DC
		0 to 10 Volt 0 to 20mA 4 to 20mA

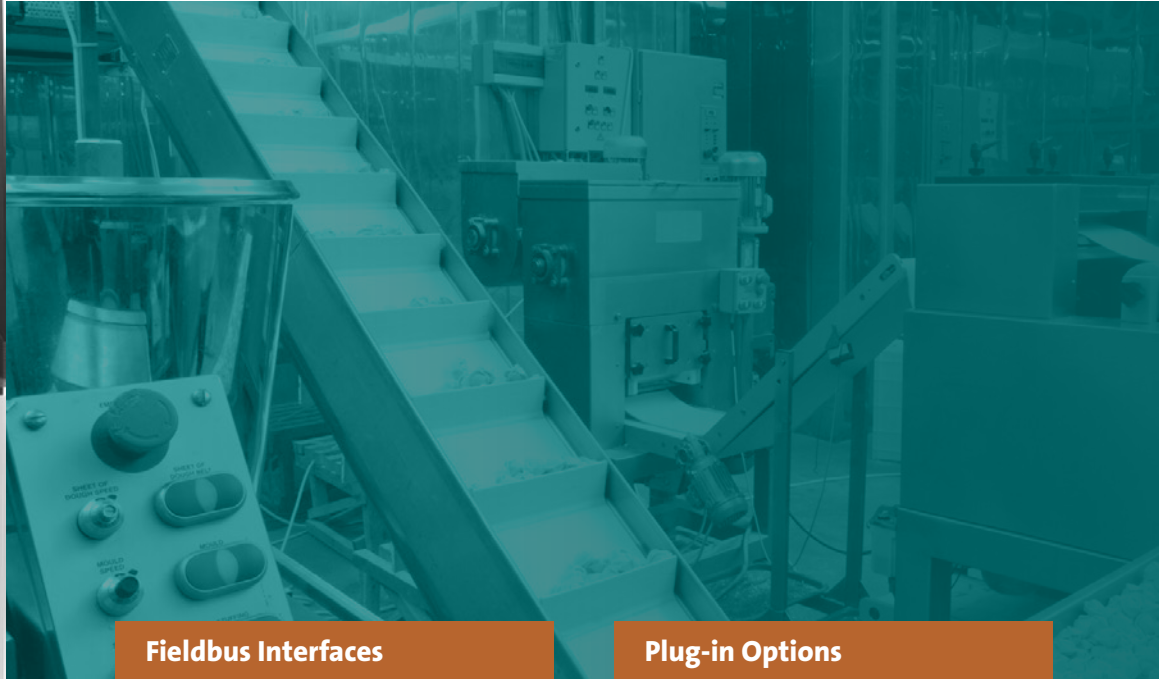
Application Features	PID Control	Internal PID Controller Multi Setpoint Select Standby / Sleep Mode Boost Function
	Hoist Mode	Dedicated Hoist Mode Motor Holding Brake Pre-Torque & Control Over Limit Protection

Maintenance & Diagnostics	Fault Memory	Last 4 Trips stored with time stamp
	Data Logging	Logging of data prior to trip for diagnostic purposes: - Output Current - Drive Temperature - DC Bus Voltage Plus more in Optitools
	Maintenance Indicator	Maintenance Indicator with user adjustable maintenance interval Onboard service life monitoring
	Monitoring	Hours Run Meter Resettable & Non Resettable kWh meters Cooling Fan Run Time

Standards Compliance	Low Voltage Directive	2014/35/EU
	EMC Directive	2014/30/EU
	Additional Conformance	UL, cUL, EAC, RCM
	Marine Certification	DNV Type Approval
	Environmental Conditions	Designed to meet IEC 60721-3-3, in operation: IP20 Drives: 3S2/3C2 IP55 & 66 Drives: 3S3/3C3

Options & Accessories

Installation options, plug-in modules and commissioning tools



Fieldbus Interfaces

Plug-in Options

Modbus RTU and CANopen on board as standard

For additional communication interfaces or functionality a range of plug-in modules is available:



Profibus DP
TTA-2-PROFB-IN



DeviceNet
TTA-2-DEVNT-IN



Ethernet IP
TTA-2-ETHNT-IN



Modbus TCP
TTA-2-MODIP-IN



Profinet
TTA-2-PFNET-IN



EtherCat
TTA-2-ETCAT-IN



Encoder Feedback
TTA-2-ENCOD-IN (5 Volt) TTA-2-ENCHT-IN (15 – 30 Volt)

Closed loop encoder feedback, compatible with a wide range of incremental encoders

Extended I/O
TTA-2-EXTIO-IN

- Additional 3 Digital Inputs
- Additional Relay Output

Extended Relay
TTA-2-CASCD-IN

Additional 3 Relay Outputs:

- Relay 3 – Drive Healthy Indication
- Relay 4 – Drive Fault Indication
- Relay 5 – Drive Running Indication

Functions are programmable / adjustable

Installation & Peripheral Options

A range of external EMC Filters, Brake Resistors, Input Chokes and Output Filters are available, to suit all installation requirements

Optistick Smart

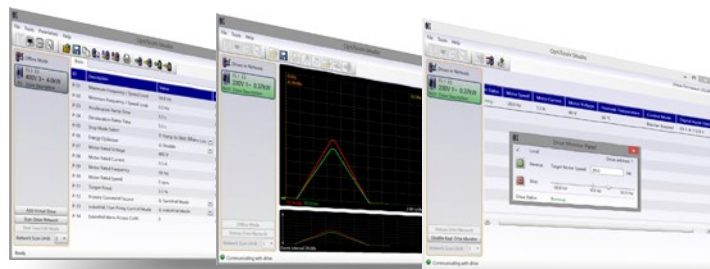


Rapid Commissioning Tool

- Allows copying, backup and restore of drive parameters
- Provides Bluetooth interface to a PC running OptiTools Studio or the OptiTools Mobile app on a smartphone
- Onboard NFC (Near Field communication) for rapid data transfer

TTA-3-STICK-IN

OptiTools Studio



Powerful PC Software

Drive commissioning and parameter backup

- Real-time parameter editing
- Drive network communication
- Parameter upload, download and storage
- Simple PLC function programming
- Real-time scope function and data logging
- Real-time data monitoring

Compatible with:

Windows Vista
Windows 7
Windows 8
Windows 8.1
Windows 10



PHONE 1300 TECH TOP

www.techtop.com.au

OFFICES

VICTORIA HEAD OFFICE

33-35 Gaine Road
Dandenong Sth VIC 3175
P: +61 (0) 3 9753 2222
E: sales@techtop.com.au

QUEENSLAND - BRISBANE

38-42 Quilton Place
Crestmead QLD 4132
P: +61 (0) 7 3106 5111
E: qldsales@techtop.com.au

QUEENSLAND - MACKAY

2/3 Ginger Street
Paget QLD 4740
P: +61 (0) 7 4848 1400
E: mackaysales@techtop.com.au

NEW SOUTH WALES

2/7 Kelham Place
Glendenning NSW 2761
P: +61 (0) 2 9114 6955
E: nswsales@techtop.com.au

SOUTH AUSTRALIA

53 Langford Street
Pooraka SA 5095
P: +61 (0) 8 8829 3088
E: sasales@techtop.com.au

WESTERN AUSTRALIA

1 Kalgan Road
Welshpool WA 6106
P: +61 (0) 8 9908 9111
E: wasales@techtop.com.au

AUCKLAND

13 Nandina Avenue
East Tamaki, Auckland 2013
Freephone: 0800 48 49 50
P: +64 9 274 7114
E: salesakl@johnbrooks.co.nz

CHRISTCHURCH

120 C Wigram Road,
Wigram, Christchurch 8025
Freephone: 0800 37 38 39
P: +64 3 366 9514
E: saleschc@johnbrooks.co.nz

AUSTRALIAN DISTRIBUTORS – MGP TAS PTY LTD

1 Speedway Drive
Latrobe TAS 7307
P: +61 (0) 3 6441 5236
F: +61 (0) 3 6441 5237
E: sales@mgptas.com.au